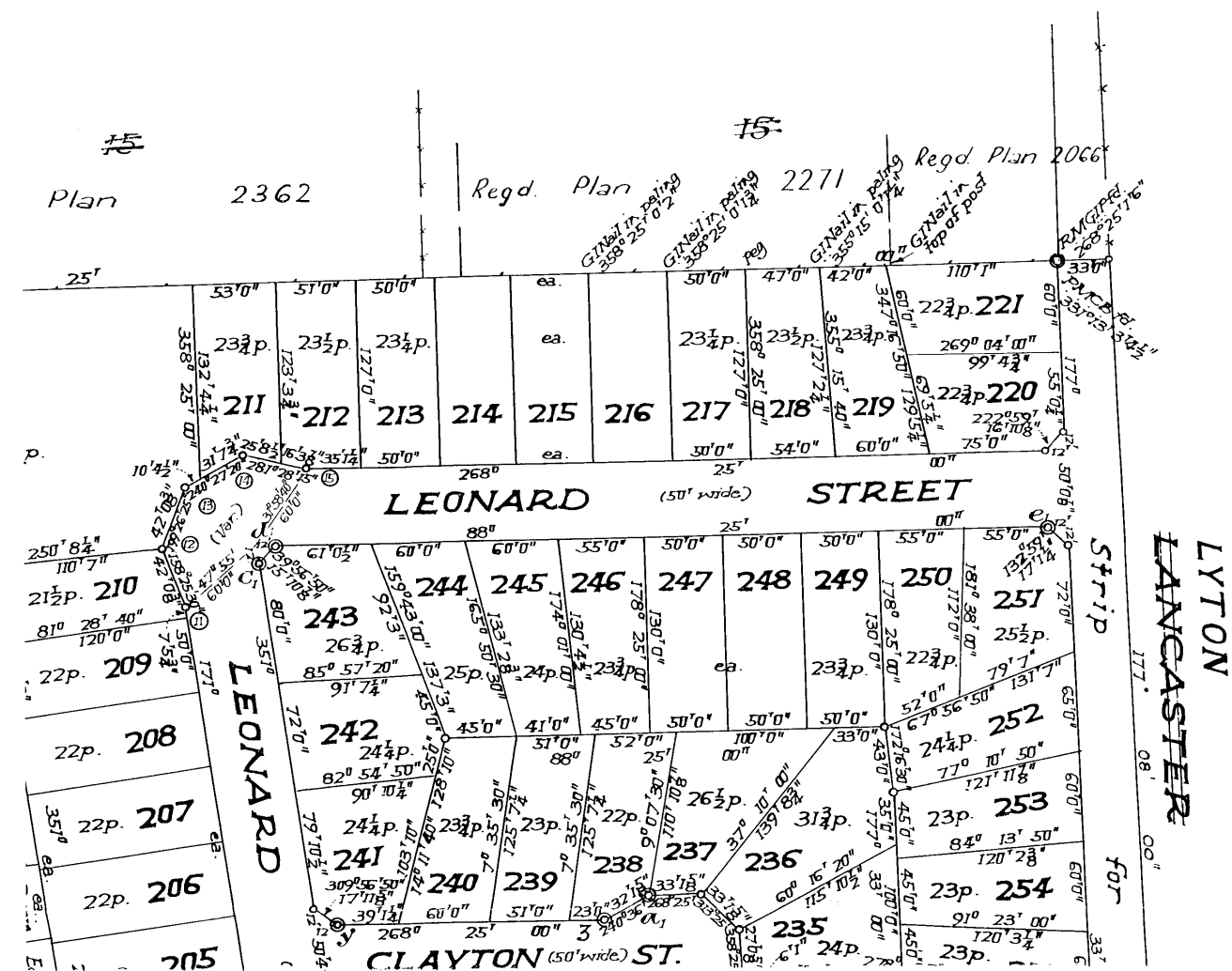
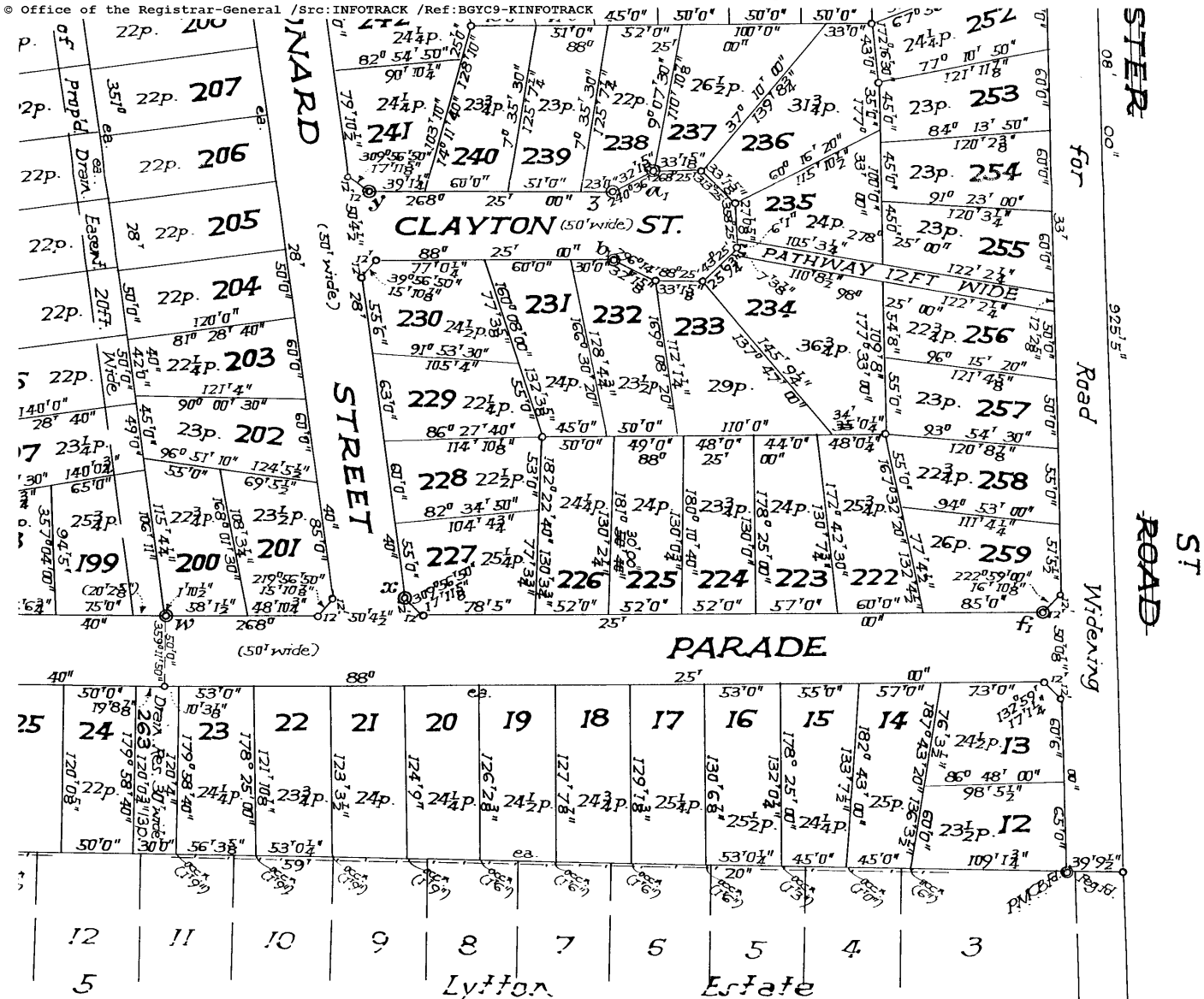


Sheet 2 of 2 sheets

M|M.





Boundaries 6-7, 7-8, 8-9, and 9-10 are equal chords
 of a circle of radius 60 feet.
 Boundaries 11-12, 12-13, 13-14 and 14-15 are equal chords
 of a circle of radius 60 feet.

Alterations and amendments
 made by me this 2nd day of June 1961.

L. J. O'Keefe

D.P. 32163 (E) 2/2

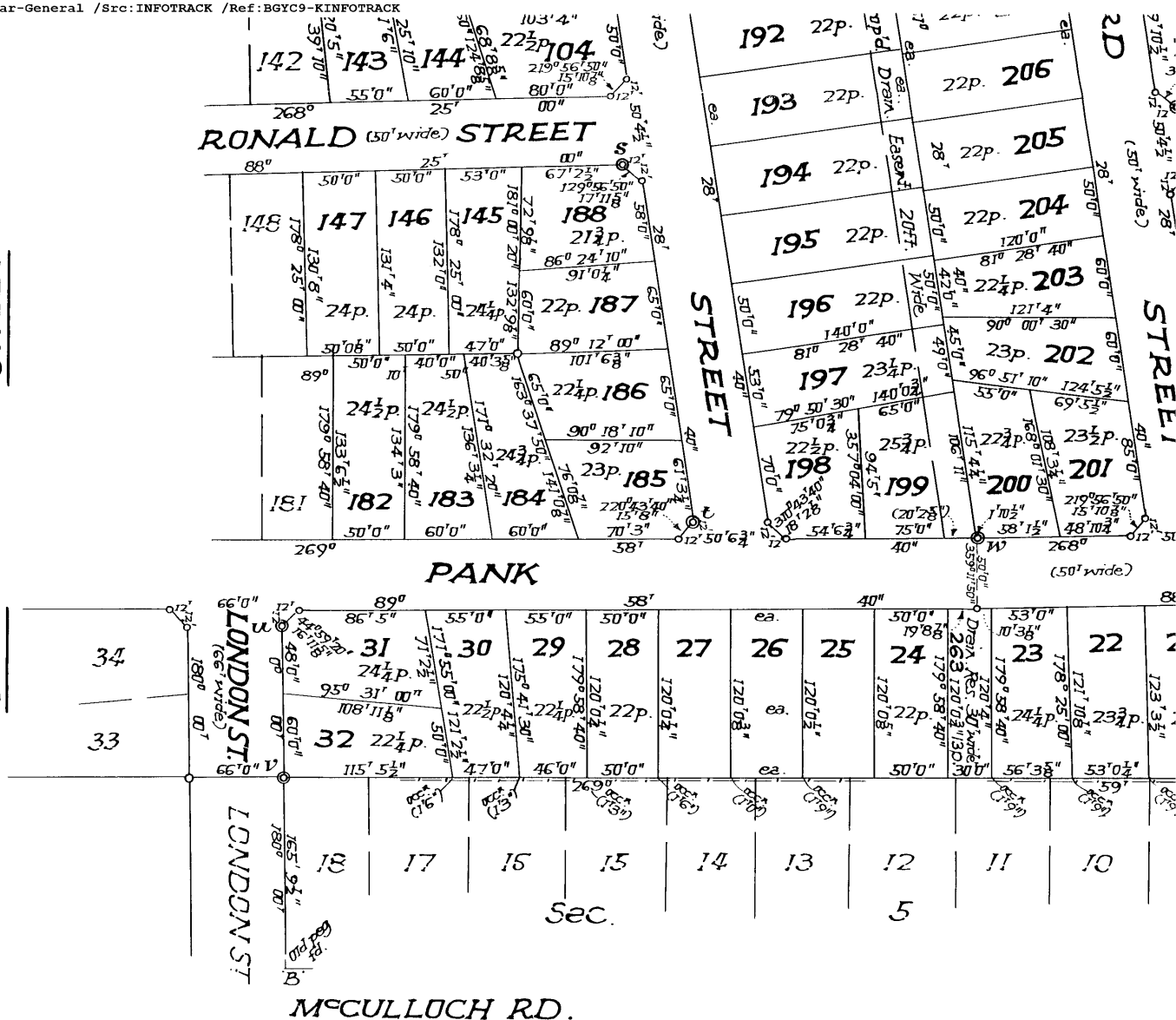
This is Sheet 2 of the plan referred to
 in my declaration of 16th Sept., 1960.

L. J. O'Keefe

Surveyor registered under the Surveyors Act 1929-46.

SHEET

SEE



Permanent Marks

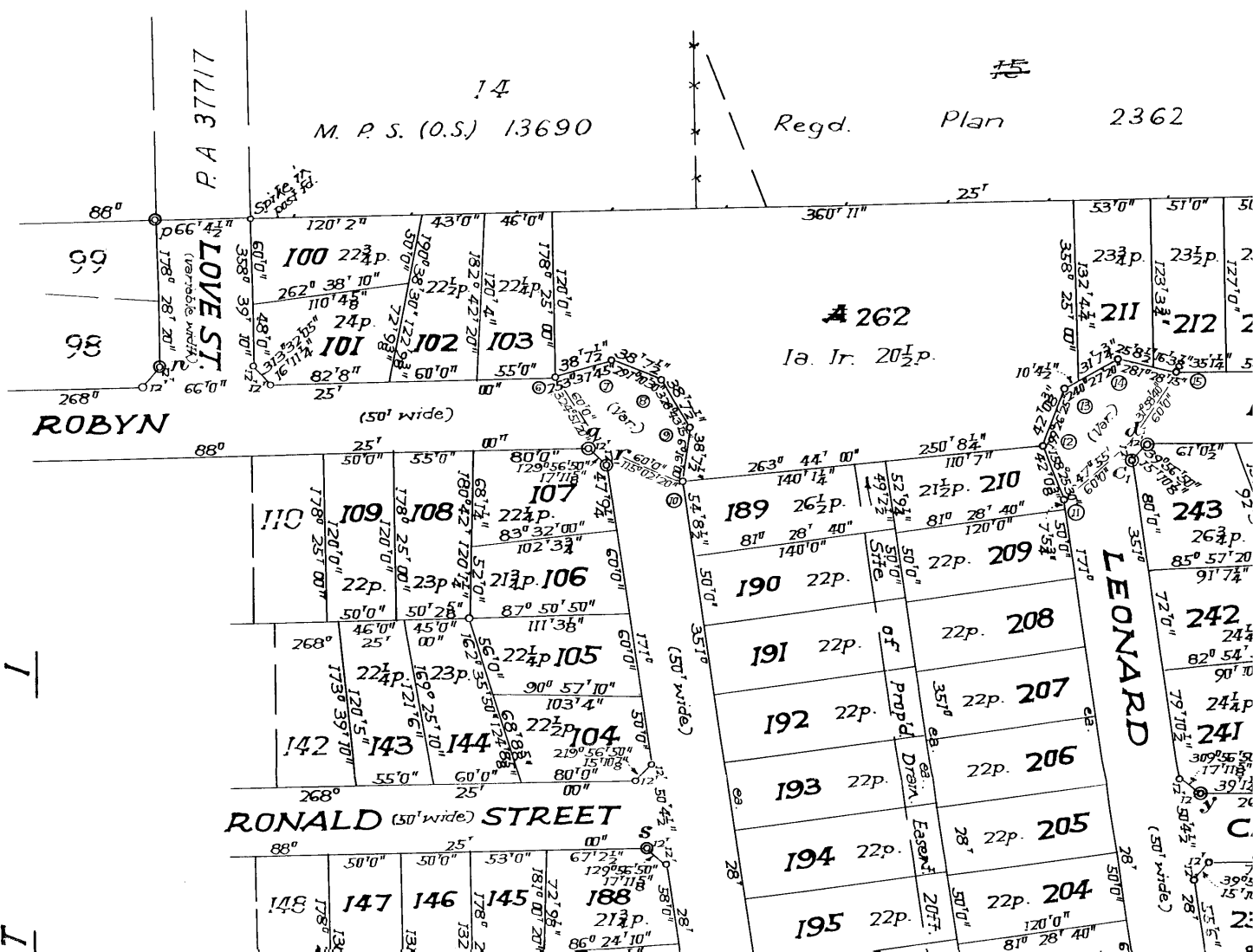
n	268° 28' 20"	1'6"	PMCB
p	331° 54' 20"	3'4 1/4"	"
q	178° 25' 00"	1'6"	"
r	267° 28' 40"	1'6"	"
s	178° 25' 00"	1'6"	"
t	267° 28' 40"	1'6"	"
u	90° 00'	1'6"	"
v	90° 00'	1'6"	"
w	359° 11' 50"	1'6"	"
x	81° 28' 40"	1'6"	"
y	358° 25' 00"	1'6"	"
z	344° 30' 30"	1'6 8/8"	"
a	344° 30' 30"	1'6 8/8"	"
b	192° 19' 30"	1'6 8/8"	"
c	81° 28' 40"	1'6"	"
d	178° 25' 00"	1'6"	"
e	178° 25' 00"	1'6"	"
f	358° 25' 00"	1'6"	"

D.P. 32163 (E) 2/2

D.P. 32163 (E)
sh 2/2

Scale: 80 feet to an Inch

H.C.P. H697556



PLAN

Sheet 1 of 2 sheets

and acquired for housing purposes

DP 32163

ECT COUNTY OF CUMBERLAND

ale: 80 feet to an inch

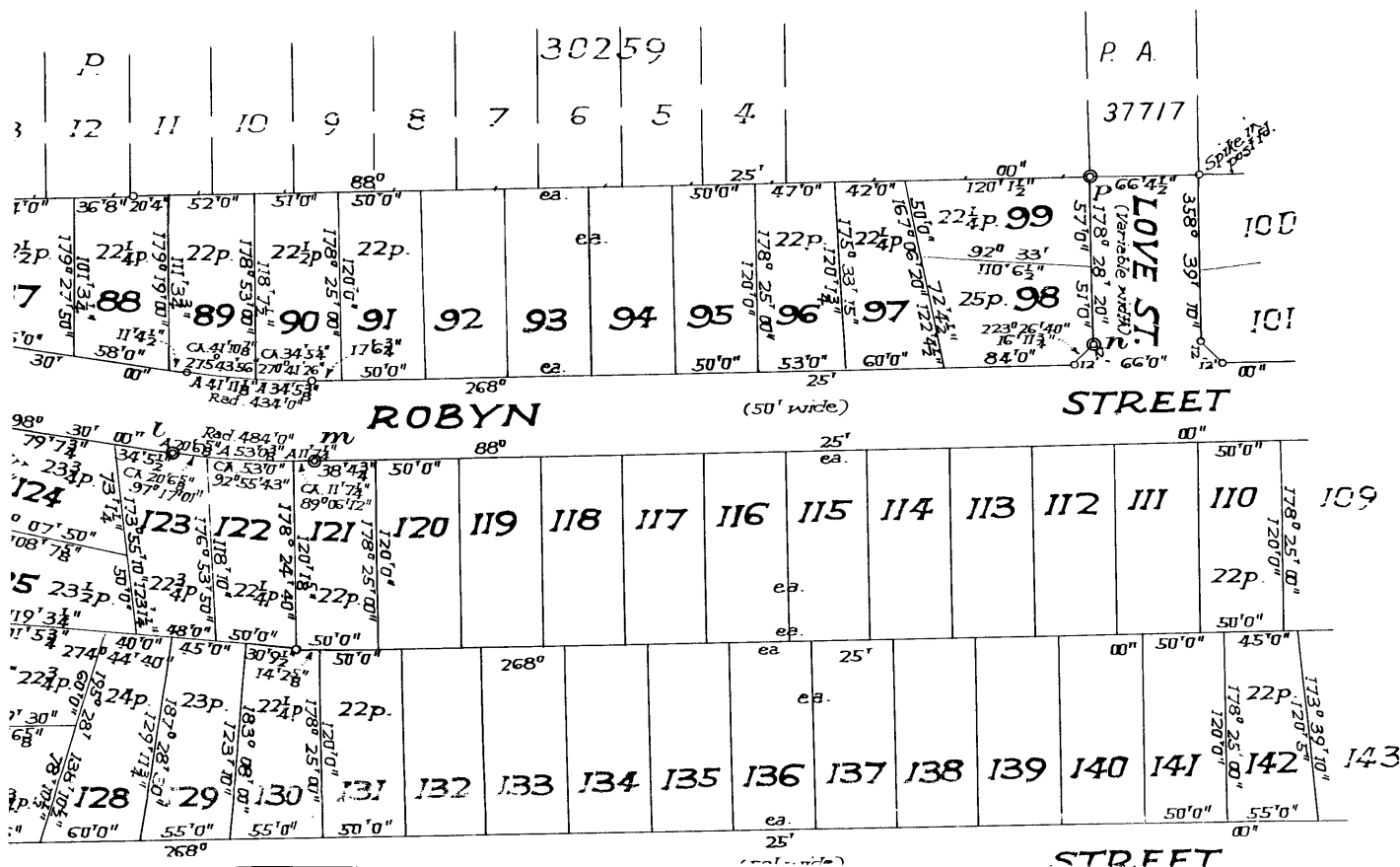
M M

D. P. 32163 (E)

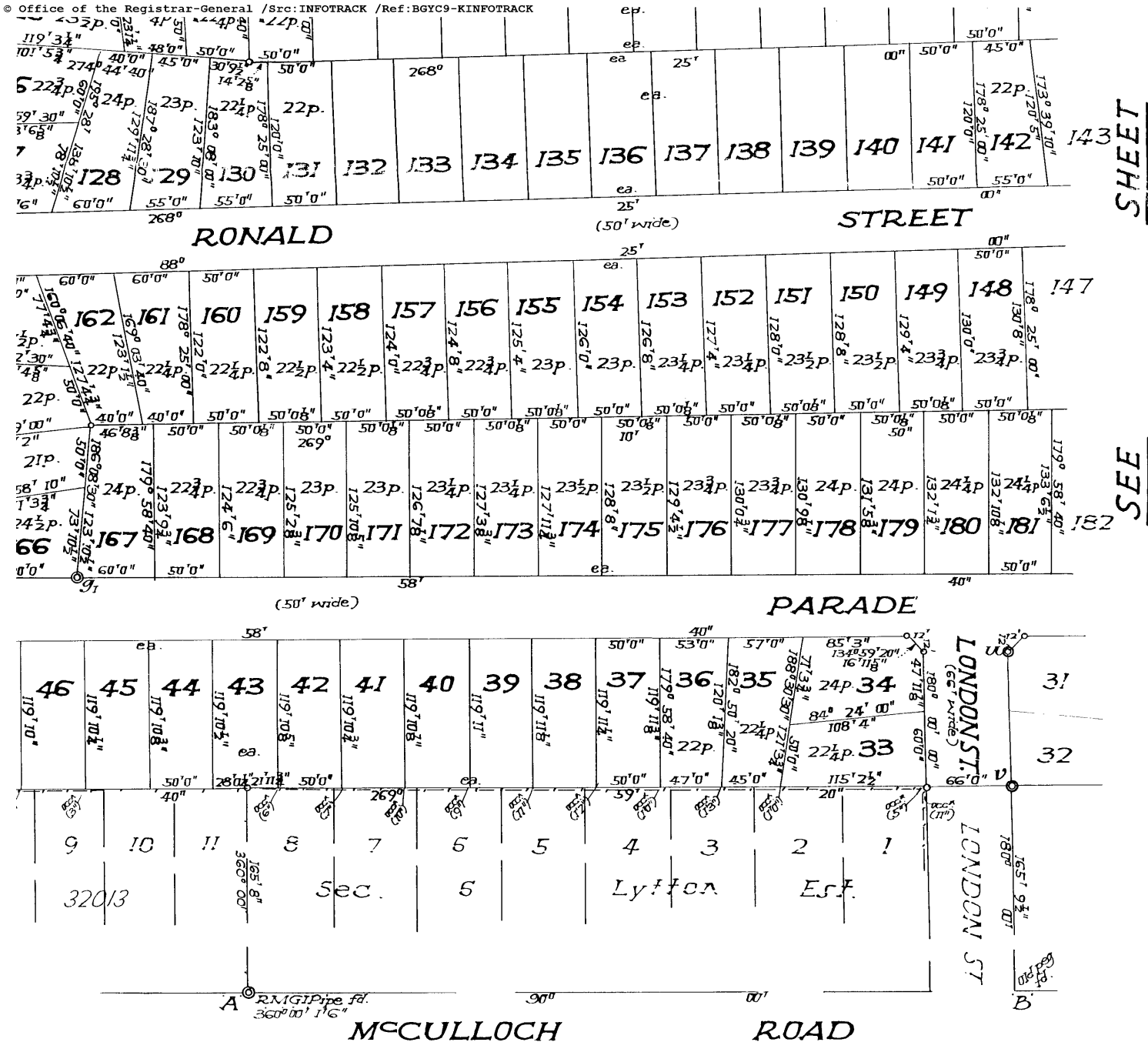


16-3-62

Title: Torrens
Purpose: Subdivision
Ref. Map: C.C.C. 325
Last Plan:



SHEET



D.P. 32163 (E) 1/2

I, Thomas Stanislaus McKeon
 of 13 Bligh Street, Sydney.

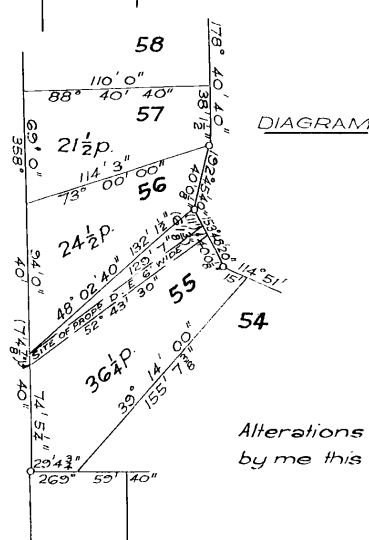
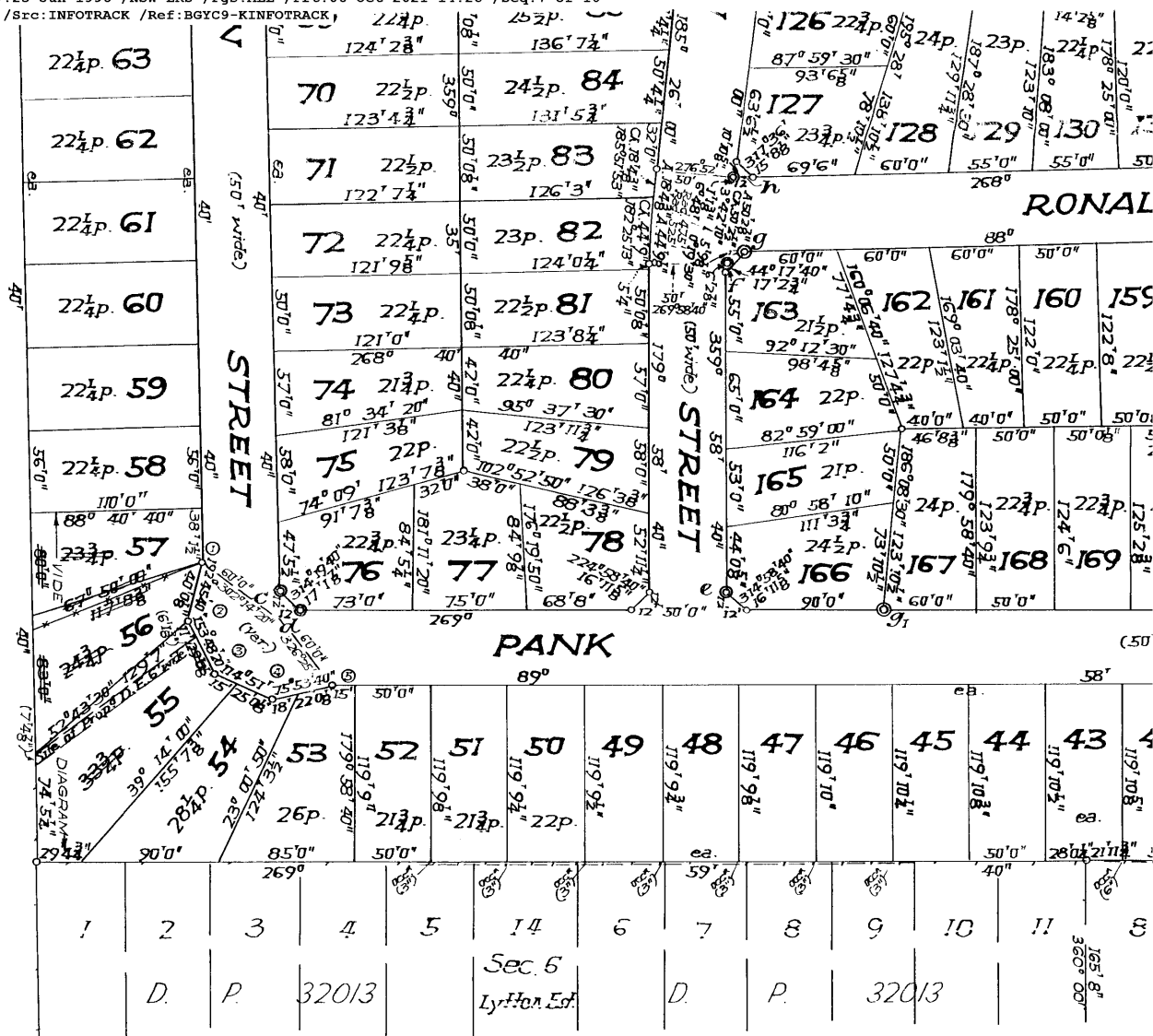
a surveyor registered under the Surveyors Act, 1929-1946, hereby certify
 that the survey represented in this plan is accurate and has been made (1)
 by me (2) under my immediate supervision in accordance with the Survey
 Practice Regulations, 1933, and was completed on 16th Sept 1960.

(Signature) *Thomas Stanislaus McKeon*
 Surveyor registered under the Surveyors Act, 1929-46.

SHEET

SEE

1-2, 2-3, 3-4 and 4-5 are equal chords of
 radius 60 feet.



Alterations and amendments made by me this 2nd day of June 1961.

Ref: Neon.

D.P. 32163 (E) 1/2

Approved by the Council and Certified in accordance with the Provisions of Section 327 of the Local Government Act, 1919.

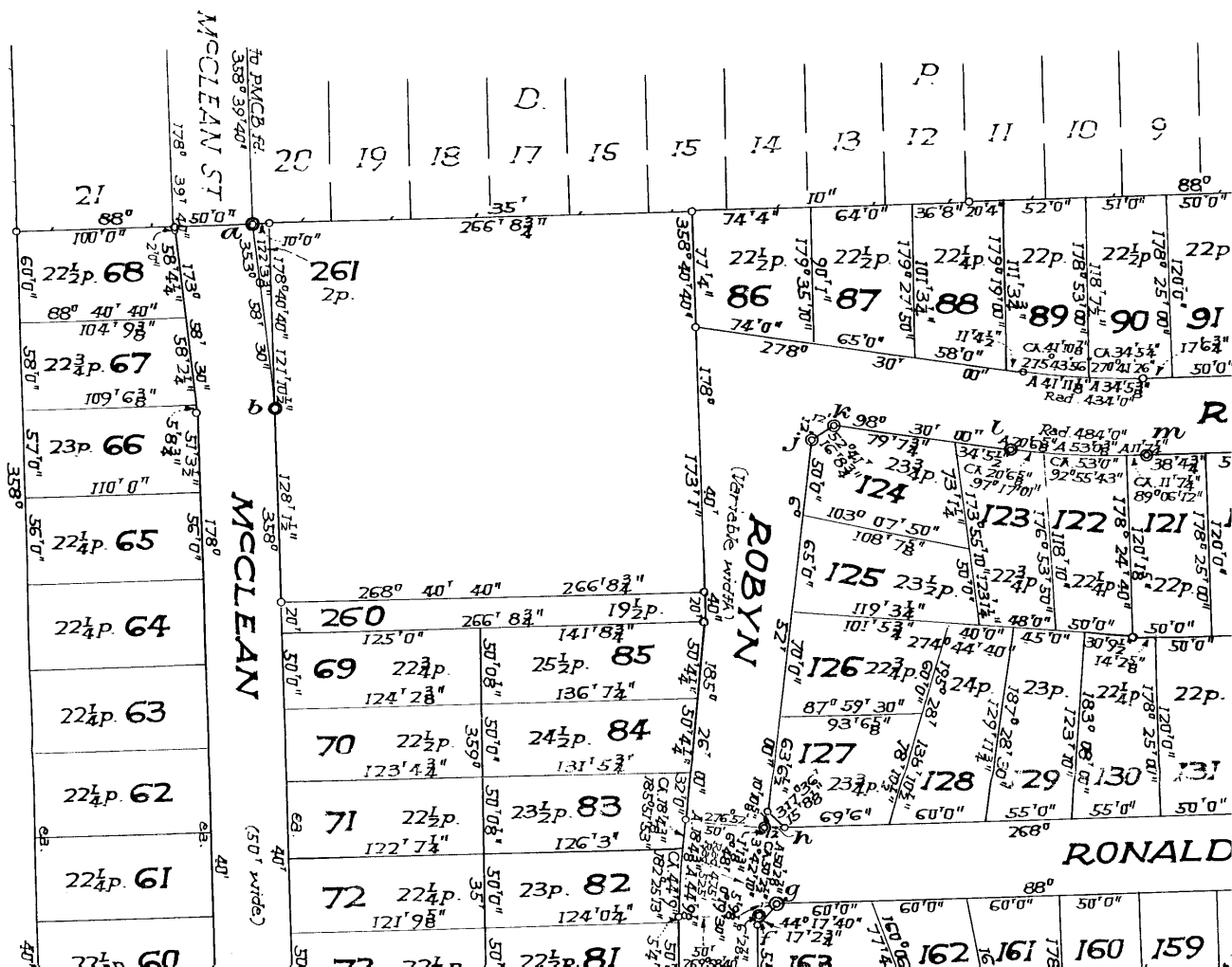
Subdivision No.

Council Clerk

Datum line of Azimuth A-B


Permanent Marks.			
a	152° 06' 00"	3 1/4"	PMCB, R.
b	86° 19' 35"	1 1/6"	PMCB.
c	88° 40' 40"	"	"
d	359° 58' 40"	"	"
e	89° 58' 40"	"	"
f	89° 58' 40"	"	"
g	178° 25' 00"	"	"
h	96° 52' 00"	"	"
j	96° 52' 00"	"	"
k	188° 30' 00"	"	"
l	188° 30' 00"	"	"
m	178° 25' 00"	"	"
n	268° 28' 20"	"	"
p	331° 54' 20"	3 1/4"	"
q	359° 58' 40"	1 1/6"	"

Boundaries 1-2, 2-3, 3-4 and 4-5 are eq a circle of radius 60 feet.



[illegible]

CONVERSION TABLE ADDED IN INCHES				CONVERSION TABLE ADDED IN INCHES	
REGISTERED GENERAL'S OFFICE				REGISTERED GENERAL'S OFFICE	
FEET	INCHES	SH	2/2	CONTD	CONTD
50	2 5/8	15	307		
50	3 1/4	15	334		
50	4 1/2	15	411		
51	1 5/8	15	355		
51	5 1/2	15	355		
52	1 5/8	15	385		
52	9 1/4	15	405		
53	0 1/4	15	121		
53	0 1/4	15	151		
54	6 3/4	15	331		
54	8 1/2	15	352		
55	0 1/4	15	170		
55	0 1/4	15	210		
56	3 5/8	15	361		
56	3 5/8	15	361		
57	1 3/8	15	378		
57	1 3/8	15	378		
58	1 1/2	15	393		
59	1 1/2	15	428		
60	6 0	15	440		
60	6 0	15	460		
61	0 1/2	15	165		
61	3 1/4	15	302		
62	0 1/2	15	182		
63	0 1/2	15	203		
64	1 1/2	15	211		
64	1 1/2	15	245		
65	1 1/4	15	258		
66	5 5/8	15	315		
67	1 1/2	15	336		
68	5 1/2	15	366		
69	5 1/2	15	386		
70	3 1/2	15	404		
71	2 1/2	15	424		
72	9 1/8	15	176		
72	9 1/8	15	184		
73	3 3/8	15	220		
73	3 3/8	15	220		
74	0 3/4	15	287		
75	0 3/4	15	318		
76	0 7/8	15	324		
76	0 7/8	15	352		
77	1 1/4	15	352		
77	1 1/4	15	352		
77	3 3/4	15	355		
77	4 1/2	15	358		
78	5 1/2	15	369		
78	5 1/2	15	391		
79	7 1/2	15	227		
79	7 1/2	15	234		
80	0 1/2	15	334		
80	0 1/2	15	334		
82	8 1/2	15	197		
82	8 1/2	15	197		
85	5 3/4	15	340		
85	5 3/4	15	340		
88	10 1/4	15	362		
88	10 1/4	15	362		
91	0 1/4	15	162		
91	0 1/4	15	162		
92	7 1/4	15	121		
92	7 1/4	15	121		
92	10 1/4	15	296		
94	5 1/2	15	378		
94	5 1/2	15	378		
98	3 1/4	15	226		
98	3 1/4	15	226		
100	6 3/8	15	340		
101	3 3/4	15	347		
102	3 3/4	15	347		
103	4 3/4	15	348		
103	4 3/4	15	348		
104	3 1/4	15	380		
105	3 1/4	15	380		
105	3 1/4	15	380		
106	11 3/8	15	358		



REGISTRAR GENERAL'S DEPARTMENT

CONVERSION TABLE ADDED IN THE

FEET	INCHES	METRES	FEET	INCHES	METRES	FEET	INCHES	METRES
108	3 1/4	3.001	108	3 1/4	3.028	108	3 1/4	3.055
109	8	3.046	109	8	3.073	109	8	3.100
110	1	3.053	110	1	3.080	110	1	3.107
110	5/8	3.059	110	5/8	3.086	110	5/8	3.113
110	7	3.076	110	7	3.093	110	7	3.120
110	8 1/2	3.174	110	8 1/2	3.174	110	8 1/2	3.174
110	10	3.048	110	10	3.073	110	10	3.098
110	10 1/8	3.060	110	10 1/8	3.060	110	10 1/8	3.089
110	11	3.067	110	11	3.067	110	11	3.091
111	3/8	3.091	111	3/8	3.091	111	3/8	3.116
111	4 1/4	3.194	111	4 1/4	3.194	111	4 1/4	3.219
112	1	3.049	112	1	3.049	112	1	3.074
112	1 1/4	3.107	112	1 1/4	3.107	112	1 1/4	3.132
114	10	3.200	114	10	3.200	114	10	3.225
114	10 1/8	3.212	114	10 1/8	3.212	114	10 1/8	3.237
115	4 1/4	3.218	115	4 1/4	3.218	115	4 1/4	3.243
115	5 1/2	3.275	115	5 1/2	3.275	115	5 1/2	3.299
115	10 1/2	3.275	115	10 1/2	3.275	115	10 1/2	3.299
120	0	3.048	120	0	3.048	120	0	3.048
120	1/4	3.053	120	1/4	3.053	120	1/4	3.058
120	1/2	3.059	120	1/2	3.059	120	1/2	3.064
120	3/4	3.065	120	3/4	3.065	120	3/4	3.070
120	1	3.071	120	1	3.071	120	1	3.076
120	1 1/4	3.077	120	1 1/4	3.077	120	1 1/4	3.082
120	1 1/2	3.083	120	1 1/2	3.083	120	1 1/2	3.088
120	2	3.089	120	2	3.089	120	2	3.094
120	2 1/2	3.095	120	2 1/2	3.095	120	2 1/2	3.100
120	3	3.101	120	3	3.101	120	3	3.106
120	3 1/8	3.107	120	3 1/8	3.107	120	3 1/8	3.112
120	3 1/4	3.113	120	3 1/4	3.113	120	3 1/4	3.118
120	3 1/2	3.119	120	3 1/2	3.119	120	3 1/2	3.124
120	4	3.125	120	4	3.125	120	4	3.130
120	4 1/4	3.131	120	4 1/4	3.131	120	4 1/4	3.137
120	4 1/2	3.137	120	4 1/2	3.137	120	4 1/2	3.142
120	5	3.143	120	5	3.143	120	5	3.148
120	5 7/8	3.180	120	5 7/8	3.180	120	5 7/8	3.186
120	6	3.186	120	6	3.186	120	6	3.191
120	6 1/2	3.192	120	6 1/2	3.192	120	6 1/2	3.197
120	7	3.198	120	7	3.198	120	7	3.203
120	7 1/4	3.204	120	7 1/4	3.204	120	7 1/4	3.209
120	7 1/2	3.210	120	7 1/2	3.210	120	7 1/2	3.215
120	8	3.216	120	8	3.216	120	8	3.221
120	8 1/4	3.222	120	8 1/4	3.222	120	8 1/4	3.227
120	8 1/2	3.228	120	8 1/2	3.228	120	8 1/2	3.233
120	9	3.234	120	9	3.234	120	9	3.239
120	9 1/4	3.240	120	9 1/4	3.240	120	9 1/4	3.245
120	9 1/2	3.246	120	9 1/2	3.246	120	9 1/2	3.251
120	10	3.252	120	10	3.252	120	10	3.257
120	10 1/4	3.258	120	10 1/4	3.258	120	10 1/4	3.263
120	10 1/2	3.264	120	10 1/2	3.264	120	10 1/2	3.269
120	10 3/4	3.270	120	10 3/4	3.270	120	10 3/4	3.275
120	11	3.276	120			120		

CONVERSION TABLE REGISTRATION SERVICE DEPARTMENT			
DP 32163	SH 2/2	CONTD	
FEET	INCHES	METERS	
131	7	40.107	
132	0 1/4	40.234	
132	0 1/4	40.240	
132	3 5/8	40.326	
132	4 1/4	40.342	
132	4 1/2	40.348	
132	9 1/8	40.455	
132	2 3/8	40.599	
133	6 1/2	40.704	
133	7 1/2	40.729	
133	3	40.919	
134	3 1/4	41.135	
136	3 1/2	41.544	
137	3	41.834	
138	8 3/4	42.285	
139	8 3/4	42.589	
139	9 3/4	42.615	
140	-	42.672	
140	0 3/4	42.691	
140	1 1/4	42.704	
141	0 7/8	44.191	
145	9 1/2	44.531	
151	-	50.353	
151	-	52.121	
151	-	60.262	
157	8 1/2	76.110	
157	8 1/4	110.007	
190	11 1/4	58.42	
250	-	54.38	
250	-	550.1	
350	-	356.4	
350	-	362.8	
351	-	359.1	
351	-	381.7	
351	-	388.4	
351	-	405.7	
351	-	419.7	
351	-	426.3	
351	-	438.5	
351	-	451.3	
351	-	467.3	
351	-	476.6	
351	-	733.5	
351	-	803.5	
351	-	929.5	
351	-	957.7	
1108	11 1/8	336.001	

CONVERSION TABLE ADDED IN
REGISTRAR GENERAL'S DEPARTMENT

DP 32163	SH	1/2	FEET INCHES	METRES
10	1	1/2	0 1/4	0.06
11	1	1/2	0 3/8	0.076
12	1	1/2	0 1/2	0.127
13	1	1/2	0 5/8	0.152
14	1	1/2	0 3/4	0.229
15	1	1/2	0 7/8	0.254
16	1	1/2	1 0	0.279
17	1	1/2	1 1/8	0.305
18	1	1/2	1 1/4	0.337
19	1	1/2	1 3/8	0.340
20	1	1/2	1 1/2	0.356
21	1	1/2	1 5/8	0.381
22	1	1/2	1 3/4	0.457
23	1	1/2	1 7/8	0.610
24	1	1/2	2 0	1.022
25	1	1/2	2 1/8	1.626
26	1	1/2	2 1/4	1.746
27	1	1/2	2 3/8	1.756
28	1	1/2	2 1/2	1.829
29	1	1/2	2 5/8	1.864
30	1	1/2	2 3/4	1.902
31	1	1/2	2 7/8	2.207
32	1	1/2	3 0	2.257
33	1	1/2	3 1/8	3.048
34	1	1/2	3 1/4	3.353
35	1	1/2	3 3/8	3.467
36	1	1/2	3 1/2	3.537
37	1	1/2	3 5/8	4.267
38	1	1/2	3 3/4	4.534
39	1	1/2	3 7/8	4.772
40	1	1/2	4 0	4.778
41	1	1/2	4 1/8	5.099
42	1	1/2	4 1/4	5.175
43	1	1/2	4 3/8	5.175
44	1	1/2	4 1/2	5.229
45	1	1/2	4 5/8	5.251
46	1	1/2	4 3/4	5.353
47	1	1/2	4 7/8	5.486
48	1	1/2	5 0	5.998
49	1	1/2	5 1/8	6.096
50	1	1/2	5 1/4	6.198
51	1	1/2	5 3/8	6.264
52	1	1/2	5 1/2	6.599
53	1	1/2	5 5/8	6.709
54	1	1/2	5 3/4	7.315
55	1	1/2	5 7/8	7.623
56	1	1/2	6 0	8.541
57	1	1/2	6 1/8	9.754
58	1	1/2	6 1/4	10.497
59	1	1/2	6 3/8	10.500
60	1	1/2	6 1/2	11.176
61	1	1/2	6 5/8	11.582
62	1	1/2	6 3/4	11.621
63	1	1/2	6 7/8	12.129
64	1	1/2	7 0	12.195
65	1	1/2	7 1/8	12.779
66	1	1/2	7 1/4	12.802
67	1	1/2	7 3/8	13.427
68	1	1/2	7 1/2	13.640
69	1	1/2	7 5/8	13.716
70	1	1/2	7 3/4	14.167
71	1	1/2	7 7/8	14.234
72	1	1/2	8 0	14.259
73	1	1/2	8 1/8	14.326
74	1	1/2	8 1/4	14.465
75	1	1/2	8 3/8	14.608
76	1	1/2	8 1/2	14.627

CONVERSION TABLE ADDED IN
REGISTRAR GENERAL'S DEPARTMENT

DP 32163	SH	1/2	CONTD	FEET INCHES	METRES
48	-	-	14.630	48	-
49	-	-	15.240	49	-
50	0	1/8	15.243	50	0 1/8
51	0	1/4	15.304	50 2 1/2	15.304
52	0	3/8	15.313	50 3/4	15.313
53	0	1/2	15.348	50 1/2	15.348
54	0	5/8	15.454	51 3 1/2	15.454
55	0	7/8	15.520	52 1 1/4	15.520
56	0	1	16.135	53 0 3/8	16.135
57	0	1 1/8	16.164	53 1/2	16.164
58	0	1 1/4	16.709	54 1 1/2	16.709
59	0	1 1/2	17.314	57 3 1/2	17.314
60	0	1 3/4	17.463	58 2 1/4	17.463
61	0	1 5/8	17.736	58 4 1/4	17.736
62	0	1 7/8	18.288	60	18.288
63	0	2 0	19.358	63 6 1/2	19.358
64	0	2 1/8	19.507	64	19.507
65	0	2 1/4	20.117	66	20.117
66	0	2 3/8	20.291	68 8 1/2	20.291
67	0	2 1/2	21.031	69 6	21.031
68	0	2 5/8	21.184	70 3 3/4	21.184
69	0	2 3/4	21.336	71 3 3/4	21.336
70	0	2 7/8	22.060	72 4 1/2	22.060
71	0	3 0	22.250	73 1 1/4	22.250
72	0	3 1/8	22.482	73 7 7/8	22.482
73	0	3 1/4	22.517	74 10 1/2	22.517
74	0	3 3/8	22.555	74 4	22.555
75	0	3 1/2	22.689	74 5 1/4	22.689
76	0	3 5/8	23.571	77 4 3/4	23.571
77	0	3 3/4	24.041	77 10 1/2	24.041
78	0	3 7/8	24.216	79 7 3/4	24.216
79	0	4 0	25.403	84 5 1/4	25.403
80	0	4 1/8	25.737	84 9 7/8	25.737
81	0	4 1/4	25.854	85 3	25.854
82	0	4 3/8	25.984	85 3 3/8	25.984
83	0	4 1/2	26.908	90 1	26.908
84	0	4 5/8	27.432	90 1 3/8	27.432
85	0	4 3/4	27.457	91 6 5/8	27.457
86	0	4 7/8	28.515	93 6 5/8	28.515
87	0	5 0	28.651	94	28.651
88	0	5 1/8	29.988	98 5	29.988
89	0	5 1/4	29.997	98 5	29.997
90	0	5 3/8	30.480	100	30.480
91	0	5 1/2	30.867	101 3 1/4	30.867
92	0	5 5/8	31.937	101 5 3/8	31.937
93	0	5 3/4	33.020	108 4	33.020
94	0	5 7/8	33.112	108 4 3/4	33.112
95	0	6 0	33.385	109 6 3/8	33.385
96	0	6 1/8	33.528	110	33.528
97	0	6 1/4	33.693	110 6 1/2	33.693
98	0	6 3/8	33.928	111 3 3/4	33.928
99	0	6 1/2	34.823	114 3	34.823
100	0	6 5/8	35.116	115 2 1/2	35.116
101	0	6 3/4	35.408	116 2	35.408
102	0	6 7/8	36.157	118 10	36.157
103	0	7 0	36.220	119 9 1/4	36.220
104	0	7 1/8	36.500	119 9 1/8	36.500
105	0	7 1/4	36.503	119 9 1/4	36.503
106	0	7 3/8	36.513	119 9 1/2	36.513
107	0	7 1/2	36.519	119 9 3/4	36.519

CONVERSION TABLE ADDED IN
REGISTRAR GENERAL'S DEPARTMENT

DP 32163	SH	1/2	CONTD	FEET INCHES	METRES
119	9	7/8	36.522	119	36.522
120	10	1/4	36.525	119 10	36.525
121	10 1/8	3/8	36.532	119 10 3/8	36.532
122	10 1/4	1/2	36.535	119 10 1/2	36.535
123	10 1/2	5/8	36.541	119 10 5/8	36.541
124	10 3/4	7/8	36.544	119 10 3/4	36.544
125	10 7/8	1	36.551	119 10 7/8	36.551
126	11 1/8	1 1/8	36.554	119 11 1/8	36.554
127	11 1/4	1 1/4	36.557	119 11 1/4	36.557
128	11 1/2	1 3/8	36.560	119 11 3/8	36.560
129	11 3/4	1 5/8	36.576	120 1 3/8	36.576
130	12 0	2 0	36.611	120 1 3/8	36.611
131	12 1/8	2 1/8	36.614	120 1 1/2	36.614
132	12 1/4	2 3/8	36.617	120 1 5/8	36.617
133	12 1/2	2 5/8	36.620	120 1 3/4	36.620
134	12 3/4	3 0	36.673	120 5	36.673
135	13 0	3 1/8	36.681	121 3 1/8	36.681
136	13 1/8	3 3/8	36.690	121 3 3/4	36.690
137	13 1/4	3 5/8	37.125	121 9 5/8	37.125
138	13 1/2	4 0	37.186	121 10 1/2	37.186
139	13 3/4	4 1/2	37.259	122 2 7/8	37.259
140	14 0	4 3/4	37.268	122 3 1/4	37.268
141	14 1/8	4 5/8	37.271	122 3 3/8	37.271
142	14 1/4	4 7/8	37.284	122 3 7/8	37.284
143	14 1/2	5 0	37.300	122 4 1/2	37.300
144	14 3/4	5 1/2	37.370	122 4 1/2	37.370
145	14 5/8	5 3/8	37.389	122 7 1/4	37.389
146	14 3/4	5 5/8	37.452	122 8	37.452
147	14 7/8	6 0	37.529	123 10 1/2	37.529
148	15 0	6 1/8	37.529	123 1 1/2	37.529
149	15 1/8	6 3/8	37.592	123 1 1/4	37.592
150	15 1/4	6 5/8	37.611	123 4 3/4	37.611
151	15 1/2	6 7/8	37.678	123 7 3/8	37.678
152	15 3/4	7 0	37.700	123 8 1/4	37.700
153	15 5/8	7 1/8	37.703	123 8 3/8	37.703
154	15 3/4	7 3/8	37.738	123 9 3/4	37.738
155	15 7/8	7 5/8	37.744	123 10 1/2	37.744
156	16 0	7 7/8	37.757	123 11 3/4	37.757
157	16 1/8	8 0	37.789	123 11 7/8	37.789
158	16 1/4	8 1/8	37.792	123 12 1/2	37.792
159	16 1/2	8 3/8	37.802	124 0 1/4	37.802
160	16 3/4	8 5/8	37.856	124 2 3/8	37.856
161	16 5/8	8 7/8	37.884	124 3 1/2	37.884
162	16 3/4	9 0	37.948	124 6	37.948
163	16 7/8	9 1/8	38.100	124 8	38.100
164	17 0	9 3/8	38.160	125 2 3/8	38.160
165	17 1/8	9 5/8	38.302	125 2 3/8	38.302
166	17 1/4	9 7/8	38.370	125 10 5/8	38.370
167	17 3/8	10 0	38.405	126 3	38.405
168	17 1/2	10 1/8	38.481	126 3 3/8	38.481
169	17 3/4	10 3/8	38.491	126 3 3/8	38.491
170	17 5/8	10 5/8	38.586	126 7 1/8	38.586
171	17 3/4	11 0	38.710	127 8	38.710
172	17 7/8	11 1/8	38.795	127 3 3/8	38.795
173	18 0	11 3/8	38.811	127 4 3/4	38.811
174	18 1/8	11 5/8	38.830	127 4 3/4	38.830
175	18 1/4	11 7/8	39.008	127 11 3/4	39.008
176	18 3/8	12 0	39.014	128 1 1/2	39.014
177	18 1/2	12 1/8	39.053	128 8	39.053
178	18 3/4	12 3/8	39.218	128 8	39.218
179	18 5/8	12 5/8	39.421	129 4 1/2	39.421
180	18 3/4	13 0	39.434	129 7	39.434
181	18 7/8	13 1/8	39.624	129 11 3/4	39.624
182	19 0	13 3/8	39.643	130 8 3/4	39.643
183	19 1/8	13 5/8	39.827	130 8 3/4	39.827
184	19 1/4	14 0	39.856	130 9 1/8	39.856
185	19 3/8	14 1/8	40.062	131 5 3/8	40.062
186	19 1/2	14 3/8	40.065	131	40.065

CONVERSION TABLE ADDED IN
REGISTRAR GENERAL'S DEPARTMENT

FEET	INCHES	METRES
131	5 3/4	40.075
132	1 1/2	40.272
133	1 3/4	40.278
134	10	40.488
135	10 1/8	40.491
136	6 1/2	40.704
137	7 1/4	41.637
138	10 1/2	42.329
139	8 3/4	43.199
140	7 3/8	43.311
141	5 3/4	43.390
142	7 3/8	47.431
143	3/8	50.523
144	1/8	50.533
145	9 1/2	52.456
146	1	52.456
147	1	54.555
148	9 1/2	81.011
149	8 3/4	81.299
150	15 1/2	105.155
151	13 1/2	132.081
152	16 0	147.328
153	11 1/2	342.900
AC RD	P	SO M
-	19 1/2	493.2
-	21 1/2	531.1
-	21 1/2	545.8
-	21 3/4	550.1
-	22	556.4
-	22 1/4	562.8
-	22 1/2	565.1
-	22 3/4	571.7
-	23	581.7
-	23 1/4	588.1
-	23 1/2	594.4
-	23 3/4	600.7
-	24	607
-	24 1/4	613.4
-	24 1/2	619.7
-	25 1/2	632.3
-	26	645
-	28 1/4	714.5
-	36 1/4	916.9



LAND
REGISTRY
SERVICES

Title Search



NEW SOUTH WALES LAND REGISTRY SERVICES - TITLE SEARCH

FOLIO: 46/32163

SEARCH DATE	TIME	EDITION NO	DATE
-----	----	-----	----
6/10/2021	2:17 PM	-	-

VOL 9175 FOL 89 IS THE CURRENT CERTIFICATE OF TITLE

LAND

LOT 46 IN DEPOSITED PLAN 32163
LOCAL GOVERNMENT AREA BLACKTOWN
PARISH OF PROSPECT COUNTY OF CUMBERLAND
TITLE DIAGRAM DP32163

FIRST SCHEDULE

NEW SOUTH WALES LAND AND HOUSING CORPORATION

SECOND SCHEDULE (0 NOTIFICATIONS)

NIL

NOTATIONS

UNREGISTERED DEALINGS: NIL

*** END OF SEARCH ***

BGYC9-KM

PRINTED ON 6/10/2021

* Any entries preceded by an asterisk do not appear on the current edition of the Certificate of Title. Warning: the information appearing under notations has not been formally recorded in the Register. InfoTrack an approved NSW Information Broker hereby certifies that the information contained in this document has been provided electronically by the Registrar General in accordance with Section 96B(2) of the Real Property Act 1900.



LAND
REGISTRY
SERVICES

Title Search



NEW SOUTH WALES LAND REGISTRY SERVICES - TITLE SEARCH

FOLIO: 47/32163

SEARCH DATE	TIME	EDITION NO	DATE
-----	----	-----	----
6/10/2021	2:18 PM	-	-

VOL 9175 FOL 90 IS THE CURRENT CERTIFICATE OF TITLE

LAND

LOT 47 IN DEPOSITED PLAN 32163
LOCAL GOVERNMENT AREA BLACKTOWN
PARISH OF PROSPECT COUNTY OF CUMBERLAND
TITLE DIAGRAM DP32163

FIRST SCHEDULE

NEW SOUTH WALES LAND AND HOUSING CORPORATION

SECOND SCHEDULE (0 NOTIFICATIONS)

NIL

NOTATIONS

UNREGISTERED DEALINGS: NIL

*** END OF SEARCH ***

BGYC9-KM

PRINTED ON 6/10/2021

* Any entries preceded by an asterisk do not appear on the current edition of the Certificate of Title. Warning: the information appearing under notations has not been formally recorded in the Register. InfoTrack an approved NSW Information Broker hereby certifies that the information contained in this document has been provided electronically by the Registrar General in accordance with Section 96B(2) of the Real Property Act 1900.



LAND
REGISTRY
SERVICES

Title Search



NEW SOUTH WALES LAND REGISTRY SERVICES - TITLE SEARCH

FOLIO: 48/32163

SEARCH DATE	TIME	EDITION NO	DATE
-----	----	-----	----
6/10/2021	2:18 PM	-	-

VOL 9175 FOL 91 IS THE CURRENT CERTIFICATE OF TITLE

LAND

LOT 48 IN DEPOSITED PLAN 32163
LOCAL GOVERNMENT AREA BLACKTOWN
PARISH OF PROSPECT COUNTY OF CUMBERLAND
TITLE DIAGRAM DP32163

FIRST SCHEDULE

NEW SOUTH WALES LAND AND HOUSING CORPORATION

SECOND SCHEDULE (0 NOTIFICATIONS)

NIL

NOTATIONS

UNREGISTERED DEALINGS: NIL

*** END OF SEARCH ***

BGYC9-KM

PRINTED ON 6/10/2021

* Any entries preceded by an asterisk do not appear on the current edition of the Certificate of Title. Warning: the information appearing under notations has not been formally recorded in the Register. InfoTrack an approved NSW Information Broker hereby certifies that the information contained in this document has been provided electronically by the Registrar General in accordance with Section 96B(2) of the Real Property Act 1900.